

Key Issue



Traffic Routes

Camp Grayling Community Council

WHAT

Effective traffic routes are used to transport goods and services and are a vital component of any city, township, county, or state. There are approximately 1,296 miles of roadway within Crawford County consisting of interstate highways, county primary, and secondary roads, seasonally maintained, unimproved public roads, private roads, and military roads.

In February of 2022, a Grayling Area Transportation Study was completed to update the prior 2008 study. The 2022 Grayling Transportation Study can be found by going to the following website: https://www.nemimilitarycommunity.org/downloads/gats_finalreport_final_22222_web.pdf

The study area includes a number of large employers and activity centers, both indoor and outdoor, including Camp Grayling, the Maneuver Area Training Equipment Site (MATES), Kirkland College, Arauco, Weyerhaeuser, Downtown Grayling, Munson-Grayling Hospital, Hartwick Pines State Forest, Hanson Hills Recreation Area, and a myriad of off-road vehicle trails (ORV). The Grayling Area Transportation Study addresses current and future demands of the transportation system, safety, efficiency, convenience, and economic well-being of the traveling public in all project considerations.

WHY

Transportation routes provide key connections to goods and services. Effective routes need to allow for safe and efficient travel for all motorists and pedestrians.

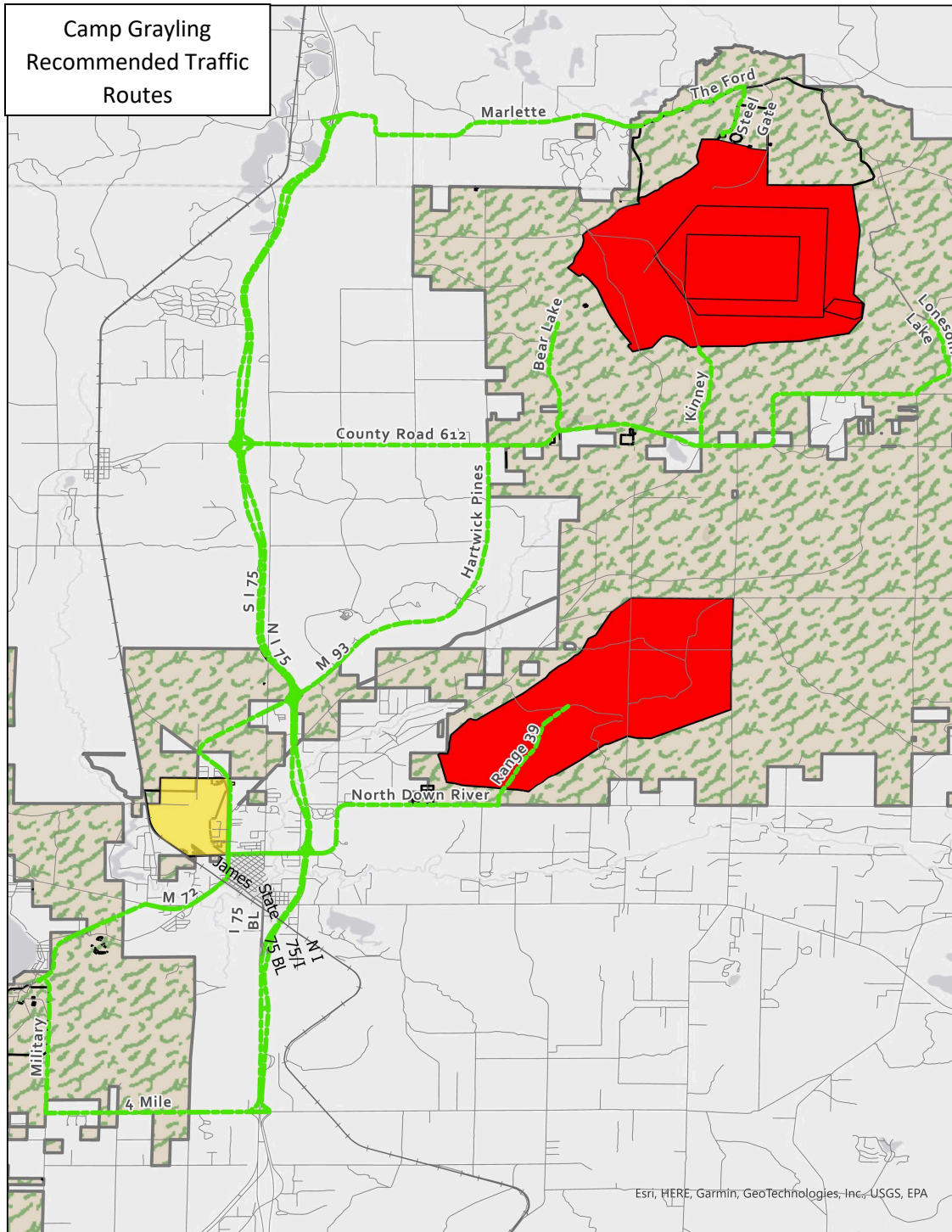
The purpose of the Transportation Study was to find mobility solutions that build on the previous planning and design work, are feasible to implement, and are properly sized for the community.

WHERE

The Transportation Study area lies mostly within Crawford County with a small portion in Roscommon County. As indicated in the Map below.



The Camp Grayling Joint Maneuver Training Center consists of designated training areas spread out throughout multiple counties intersected by I-75. The southern portion of Camp Grayling consists of Ranges 8, 10, 12, 13, 16, 18, 19, 20 & 21 along with an access point and cantonment. The Northern portion contains Range 30, the Heavy Maneuvering and Staffing area, and Range 40 Air-to-Ground area. The map below shows Camp Grayling recommended traveled routes (green) for the delivery and transfer of goods, personnel, and equipment to assure a successful training and mission.



WHAT CAN BE DONE

If transportation enhancements are your passion, consider becoming a board member of the Crawford County Road Commission. The Crawford Road Commission has many programs for improvements and a schedule of County Road Commission Meetings can be found on their website: <https://crawford-crc.com/>

A thorough review of the 2022 Grayling Transportation Area Study is important. The study describes the existing conditions, traffic analysis, and public engagement that led to the plan's recommendations. The plan can be accessed at the following website: https://www.nemimilitarycommunity.org/downloads/gats_finalreport_final_22222_web.pdf

This information is provided by the Grayling Community Council. For more information, please see the following website:

<https://www.nemimilitarycommunity.org/grayling.asp>

LINKS FOR MORE INFORMATION

Grayling Area Transportation Study

https://www.nemimilitarycommunity.org/downloads/gats_finalreport_final_22222_web.pdf

Crawford County Road Commission

<https://crawford-crc.com/>

Michigan Department of Transportation

<https://www.michigan.gov/mdot>

Camp Grayling Community Council

<https://www.nemimilitarycommunity.org/grayling.asp>

Camp Grayling Joint Maneuver Training Center Facebook Page

<https://www.facebook.com/campgraylingmi>

Camp Grayling Joint Maneuver Training Center Instagram Page

<https://www.instagram.com/campgraylingjmtc>

Camp Grayling Joint Maneuver Training Center LinkedIn Page

<https://www.linkedin.com/company/camp-grayling-jmtc/>

Camp Grayling Joint Maneuver Training Center National Guard Page

<https://minationalguard.dodlive.mil/NADWC-Installations/Camp-Grayling/>

Northeast Michigan Council of Governments

<http://www.discovernortheastmichigan.org/nemcog.asp>